



東華學院
TUNG WAH COLLEGE



Digital Mental Health International Conference 2026 (DMH 2026)

Maximising the Real-World Potential of Digital Mental Health

16-18 June 2026 | Onsite & Live Online | Tung Wah College, Hong Kong, China

The Digital Mental Health International Conference 2026 (DMH2026)

16 – 18 June 2026

Hosted by the Translational Research Centre for Digital Mental Health, Tung Wah College

CONFERENCE PROGRAMME BOOKLET

Co-organised:



Funded by:

The DMH 2026 is supported by the Institutional Development Scheme Research Infrastructure Grant (UGC/IDS(R)17/23) funded by the Research Grants Council of HKSAR.

Website:

<https://www.digitalmentalhealth2026.org>

Email:

trcdmh@twc.edu.hk

Registration Link:





東華學院
TUNG WAH COLLEGE



DIGITAL MENTAL HEALTH INTERNATIONAL CONFERENCE 2026 ORGANISING COMMITTEES

Conference Chair

Professor Sally CHAN, Tung Wah College, HKSAR, China

Programme Chair

Professor Alex CHAN, Tung Wah College, HKSAR, China

Proposal Review Chair

Professor Rick KWAN, Tung Wah College, HKSAR, China

International Networking Chair

Professor Simon LAM, Tung Wah College, HKSAR, China

Local Networking Chair

Professor Fuk Hay TANG, Tung Wah College, HKSAR, China

Social Impact Chair

Professor Albert TEO, Tung Wah College, HKSAR, China

Publication Chair

Professor Will MA, Tung Wah College, HKSAR, China

Social Event Chair

Dr Fowie NG, Tung Wah College, HKSAR, China

Finance Chair

Dr Calvin YIP, Tung Wah College, HKSAR, China

Publicity Chair

Mr Manfred LAI, Tung Wah College, HKSAR, China

International Advisory Committee

Professor Cristina BOTELLA, Jaume I University, Spain

Professor Sarah DIEFENBACH, Ludwig Maximilian University of Munich, Germany

Professor Andrea GAGGIOLI, Catholic University of Milan, Italy

Professor Roger HO, National University of Singapore, Singapore

Professor Wendy MOYLE, Griffith University, Australia

Professor Albert RIZZO, University of Southern California, United States

Professor Guiseppe RIVA, Catholic University of Milan, Italy



東華學院
TUNG WAH COLLEGE



International Programme Committee

Dr Larry AUYEUNG, Tung Wah College, HKSAR, China
Dr Stephen CHAN, Tung Wah College, HKSAR, China
Dr Wendy CHAN, HKUSpace, HKSAR, China
Dr Albert CHAN, Hong Kong Polytechnic University, HKSAR, China
Dr Cat CHENG, Shenzhen University, China
Ms Sandra CHEUNG, Tung Wah College, HKSAR, China
Dr Sing-Hang CHEUNG, University of Hong Kong, HKSAR, China
Dr Floria CHIO, Trent University, Canada
Dr Jasmine CHIO, Hong Kong Shue Yan University, HKSAR, China
Dr Gillian CHU, Chinese University of Hong Kong, HKSAR, China
Dr Raymond CHUI, Hong Kong Shue Yan University, HKSAR, China
Dr Sandrine CHUNG, Hong Kong Shue Yan University, HKSAR, China
Dr Lisa DENG, Hong Kong Baptist University, HKSAR, China
Dr Wai FU, Hong Kong Shue Yan University, HKSAR, China
Dr Ada FUNG, Hong Kong Baptist University, HKSAR, China
Mr Ivan FUNG, Tung Wah College, HKSAR, China
Dr Josephine FUNG, Hong Kong Shue Yan University, HKSAR, China
Dr Cathy HUNG, Tung Wah College, HKSAR, China
Dr Raphael HUNG, Tung Wah College, HKSAR, China
Ms Claire KAN, Tung Wah College, HKSAR, China
Dr Weixi KANG, Tung Wah College, HKSAR, China
Dr Anthony KWOK, Tung Wah College, HKSAR, China
Dr Michael KUO, Education University of Hong Kong, HKSAR, China
Dr Bess LAM, Hong Kong Shue Yan University, HKSAR, China
Dr Maggie LAM, Tung Wah College, HKSAR, China
Dr Angus LAM, Tung Wah College, HKSAR, China
Dr Man-Fung Stephanie LEE, Technological and Higher Education Institute of Hong Kong, HKSAR, China
Dr Bobo LAU, Hong Kong Shue Yan University, HKSAR, China
Professor Esther Yuet-Ying LAU, Education University of Hong Kong, HKSAR, China
Dr Leonia LAU, Tung Wah College, HKSAR, China
Dr Elaine LAU, Tung Wah College, HKSAR, China
Dr Wilbert LAW, Education University of Hong Kong, HKSAR, China
Ms Jenny LEE, Tung Wah College, HKSAR, China
Dr Man-Fung Stephanie LEE, Technological and Higher Education Institute of Hong Kong, HKSAR, China
Dr Angel LEUNG, Education University of Hong Kong, HKSAR, China
Dr Beeto LEUNG, Tung Wah College, HKSAR, China
Dr Mega LEUNG, University of Calgary, Canada
Dr Mei-kei LEUNG, Hong Kong Shue Yan University, HKSAR, China
Dr Wilson LEUNG, Tung Wah College, HKSAR, China
Dr Angela LI, Tung Wah College, HKSAR, China
Dr P. F. Jonah LI, University of Washington - Tacoma, United States
Dr Judy LIANG, Tung Wah College, HKSAR, China
Dr Leo LIE, The Hang Seng University of Hong Kong, HKSAR, China
Dr On Ting LO, Lingnan University, HKSAR, China
Dr Pedro LOK, Tung Wah College, HKSAR, China
Dr Suk-Ling MA, Tung Wah College, HKSAR, China
Professor Kalina MICHALSKA, University of California Riverside, United States



東華學院
TUNG WAH COLLEGE



Dr Joe NGAI, Hong Kong Shue Yan University, HKSAR, China
Dr Matthew OSEKA, Concordia Theological Seminary (Hong Kong), HKSAR, China
Dr Jingjing SU, Tung Wah College, HKSAR, China
Dr Nicolson SIU, Hong Kong University of Science and Technology, HKSAR, China
Dr Rongwei Iris SUN, Tung Wah College, HKSAR, China
Dr Anson Chui-Yan TANG, Tung Wah College, HKSAR, China
Dr Nigel THOMPSON, Hong Kong Shue Yan University, HKSAR, China
Ms Nancy TING, Tung Wah College, HKSAR, China
Ms Ada TSANG, Tung Wah College, HKSAR, China
Dr Mark TSANG, Tung Wah College, HKSAR, China
Dr Anna TSO, The Hang Seng University of Hong Kong, HKSAR, China
Dr Chi-hung WONG, Hong Kong Metropolitan University, HKSAR, China
Dr Florence WONG, Tung Wah College, HKSAR, China
Dr Kam Chung WONG, Tung Wah College, HKSAR, China
Dr Michael WONG, Tung Wah College, HKSAR, China
Dr Winnie WONG, Tung Wah College, HKSAR, China
Dr Katherne YAU, Tung Wah College, HKSAR, China
Dr Mabel YAU, Tung Wah College, HKSAR, China
Dr Winnie YUEN, Hong Kong Shue Yan University, HKSAR, China



DIGITAL MENTAL HEALTH INTERNATIONAL CONFERENCE 2026

DMH2026 AGENDA

16 June (Day 1)

Date: 16 June 2026 (Tuesday), from 9:00 – 18:30

Address: Tung Wah College, King's Park Campus, Ma Kam Chan Memorial Building, 31 Wylie Road, Homantin, Hong Kong & live online

HK Time (HKT)	Activity	Venue & Online link
09:00 – 09:30	Registration	Venue: Foyer, 2/F
09:30 – 10:00	Opening Ceremony	Venue: Lecture Theatre, 2/F Online: [Zoom room A] Meeting ID: 965 4729 8945 Password: 444777
10:00 – 10:45	Keynote Lecture 1 (KL1) <i>Maximizing the Real-World Potential of Digital Mental Health</i> Keynote Speaker: Professor Sally CHAN President of Tung Wah College Moderator: Professor Rick KWAN Associate Vice President (Academic), Tung Wah College Associate Dean (Programmes), School of Nursing, Tung Wah College	Venue: Lecture Theatre, 2/F Online: [Zoom room A] Meeting ID: 965 4729 8945 Password: 444777
10:45 – 11:00	Networking Coffee Session	—
11:00 – 11:45	Keynote Lecture 2 (KL2) <i>From Signals to Systems: Building Digital Care Pathways for Severe Mental Illness</i> Keynote Speaker: Professor Sandra BUCCI Professor of Clinical Psychology, The University of Manchester Moderator: Dr Calvin YIP Associate Professor, School of Medical and Health Sciences, Tung Wah College	Venue: Lecture Theatre, 2/F Online: [Zoom room A] Meeting ID: 965 4729 8945 Password: 444777
11:45 – 12:30	Keynote Lecture 3 (KL3) <i>Neuroergonomics in Robotic-Digital Systems for Health: Bridging Technology and Care</i> Keynote Speaker: Professor Giacinto BARRESI Professor, School of Engineering CATE, UWE Bristol Moderator: Professor Lorna SUEN Dean and Professor, School of Nursing, Tung Wah College	Venue: Lecture Theatre, 2/F Online: [Zoom room A] Meeting ID: 965 4729 8945 Password: 444777



12:45 – 14:00	<p>MindWell Tech Innovation Competition Award Presentation Ceremony cum Cheque Presentation Ceremony</p>	Venue: Campus Square, 3/F
12:30 – 14:00	<p>Networking Lunch and Poster Session</p> <p>P01: <i>Chatbot-delivered Mental Health Services for Alleviating Depressive Symptoms Among People in Asia: A Systematic Review and Meta-analysis of Randomized Controlled Trials</i> Wilson Kin Chung LEUNG, Simon Ching LAM, Bobo Ching Lam CHAN, Janice Ngar Lam CHOW, Yvonne Yuet Ying WONG, Connie Yim Ching YAU, & Lorna Kwai Ping SUEN School of Nursing, Tung Wah College, HKSAR, China</p> <p>P02: <i>A Mixed-method Assessment Study on Problematic Social Media / Conversational Artificial Intelligence Use and Mental Health in Hong Kong</i> Kin Shing SZE, Michelle Yu Sze YIU, Joyce Xu Hao JIN, Michelle Chi Ting KU, Yolanda Hui Yuen CHENG, Rachel Wai Kiu WONG, & Heidi Ka Ying LO Department of Psychiatry, School of Clinical Medicine, LKS Faculty of Medicine, the University of Hong Kong, HKSAR, China</p> <p>P03: <i>Clinical Efficacy and Cultural Acceptability of Immersive Virtual Reality Meditation (IVRM) for Generalized Anxiety Disorder: A Pilot Trial in Hong Kong</i> Xuhao JIN, Paul K.S. SZE, Michelle S.Y. YU, Martin K.M. LAU, Chloe K.Y. TAM, Gabriel S.C. WONG, Windsor P.T. LI, Rachel W.Y. TSANG, & Heidi K.Y. LO Department of Psychiatry, School of Clinical Medicine, LKS Faculty of Medicine, the University of Hong Kong, HKSAR, China</p> <p>P04: <i>Applying a Trauma-informed Framework to Create a Human-centered Safety Checklist for Navigating AI-integrated Digital Mental Health Applications</i> Jeane DAVIS, Independent Researcher, USA</p> <p>P05: <i>Motivational Interviewing Interventions for Psychological Well-Being and Health Behaviors in Patients with Type 2 Diabetes: A Systematic Review and Meta-Analysis</i> Nirunya NARUPAN¹, Kanokwan HOUNSRI¹, Nopporn VONGSIRIMAS², & Piyanee YOBAS¹ ¹Alice Lee Centre for Nursing Studies, Yong Loo Lin School of Medicine, National University of Singapore, Singapore ²Faculty of Nursing, Mahidol University, Bangkok, Thailand</p>	Venue: Campus Square, 3/F



P06:

Development of a Chatbot-Delivered Structured Psychological Intervention for Teenagers with Adolescent Idiopathic Scoliosis: A Multi-Method Approach

Yan LI, & Jiaying LI

School of Nursing, The Hong Kong Polytechnic University, Hong Kong, China

P07:

AI in Child Psychotherapy: A Scoping Review of Korean Research Trends and Implications for Digital Mental Health Practice

Sung-Won LEE¹, Eun-Sun JUNG², & Bo-Young CHOI³

¹Hannam University, South Korea

²Halla University, South Korea

³Jeju National University, South Korea

P08:

Preliminary Effectiveness of a Chatbot-Delivered Structured Psychological Intervention for Teenagers with Adolescent Idiopathic Scoliosis: A Pilot Randomized Controlled Trial

Jiaying LI¹, Teng ZHANG², Jason Pui Yin CHEUNG², Nan MENG², Zhaolong WU², Yufei LU¹, Dennis Chak Fai MA¹, Engle Angela CHAN¹, Janelle YORKE¹, & Yan LI¹

¹School of Nursing, The Hong Kong Polytechnic University, HKSAR, China

²Department of Orthopaedics and Traumatology, Medicine School, The University of Hong Kong, HKSAR, China

P09:

Investigate the Effectiveness of Five-Elements Music Therapy in Reducing Anxiety Levels Among College Students

Cheuk Lam TSOI, Tung Wah College, HKSAR, China

P10 (pending):

Proportion of Suicidal Ideation Among Adolescents Aged 13 to 19 Years with Problematic Internet Use in Bangla Medium Schools of Dhaka, Bangladesh

Ifat KABIR, MD (Child and Adolescent Psychiatry), Bangladesh

P11(pending):

Nurturing Minds Through mHealth: A low-intensity psychological Intervention to Improve Mental Health in Pregnant Mothers

Zahid ALI, Aga Khan University, Pakistan

P12(pending):

Turning Caregiver Chat into Structured Early-Risk Screening: A Three-Stage LLM Pipeline

Jaehyun LIM, & Jinwoo CHO

LumanLab Inc., South Korea



	<p>Virtual Oral Presentations (V1) Exploring Digital Mental Health</p> <p>Session Chair: Ms Ada TSANG Senior Lecturer, School of Arts and Humanities, Tung Wah College</p> <p>V01-1: <i>Exploring Digital Mental Health in UP Diliman Freedom Wall: Emotional Support, Community Building, and Social Change</i> Gerard CONCEPCION, University of the Philippines, The Philippines</p> <p>V01-2: <i>Understanding the Digital Divide and Student Well-being: A Mediation Analysis of Digital Mental Health Literacy and Help-seeking Behavior</i> Saba SAIFI¹, Himanshi LAHORA², & Surabhi LAVATE³ ¹M.A. Psychology, Indira Gandhi National Open University, India ²Ph.D. Scholar, Department of Psychology, Guru Nanak Dev University, Amritsar, India ³M.A. Clinical Psychology (Pursuing), India</p> <p>V01-3: <i>Bridging the Gap Between Awareness and Action: The Role of Digital Engagement and Mental Health Literacy in Help-Seeking</i> Manasi GUPTA, & Stuti JHAVERI Huesofthemind Mental Well-Being Foundation, India</p> <p>V01-4: <i>Digitising and Analysing Depression and Anxiety in Uganda: A Longitudinal Mental Health Data Approach Using DHIS2</i> Sarah AWINO, Prosper BEHUMBIIZE, Sonia KUHUMURA, Stephen OCAYA, & Brian NTARE HISP Uganda, Uganda</p> <p>V01-5: <i>Addressing the Mental Health Crisis among PLWHIV in Southern Cameroon: A Call for Integrated Care</i> Enesta MOBA YENTOH, Christian EYOUM, Chanceline BILOUNGA, Michel EKONO, & Charlotte Nguéfack TCHENTE Faculty of Medicine and Pharmaceutical Sciences, University of Douala, Cameroon</p> <p>V01-6: <i>Can a Serious Game Support Teacher Wellbeing? Evidence from the Teaching to Be Project</i> Valeria CAVIONI¹, Elisabetta CONTE², & Veronica ORNAGHI³ ¹Universitas Mercatorum, Rome, Italy ²University of Bergamo, Bergamo, Italy ³University of Milano-Bicocca, Milan, Italy</p>	<p>Venue: Rm1402, 14/F Online: [Zoom room D] Meeting ID: 949 3346 1287 Password: 555000</p>
--	---	---



<p>14:00 – 14:45</p>	<p>Keynote Lecture 4 (KL4) <i>Opportunities and Challenges in Co-Creating a Hybrid Human-AI Mental Health Ecosystem</i></p> <p>Keynote Speaker: Professor Winnie W. S. MAK Professor of Department of Psychology, The Chinese University of Hong Kong</p> <p>Moderator: Professor Will MA Professor, School of Arts and Humanities, Tung Wah College Director of the Centre for Innovative Teaching and Learning (CITL), Tung Wah College</p>	<p>Venue: Lecture Theatre, 2/F Online: [Zoom room A] Meeting ID: 965 4729 8945 Password: 444777</p>
<p>14:45 – 15:00</p>	<p>Coffee, Networking, Transition</p>	<p>—</p>
<p>15:00 – 16:00</p>	<p>Symposium Session (S1) <i>Building a Digital Mental Health Ecosystem Through Inter-Disciplinary Collaboration: Insights from The Jockey Club TourHeart+ Project</i></p> <p>Alan C. Y. TONG^{1,2}, Charmine KAN³, & Olivia H.C. JUNG^{4,5} ¹ Research Team Lead of Jockey Club TourHeart+ Project ² Research Assistant Professor, Department of Psychology, CUHK, HKSAR, China ³ Project Manager of the Jockey Club TourHeart+ Project ⁴ Associate Head of Wellness and Counselling Centre ⁵ Senior Student Counsellor, Office of Student Affairs, CUHK HKSAR, China</p> <p>Moderator: Professor Winnie W. S. MAK Principal Investigator of the Jockey Club TourHeart+ Project Professor, Department of Psychology, CUHK</p>	<p>Venue: Lecture Theatre, 2/F Online: [Zoom room A] Meeting ID: 965 4729 8945 Password: 444777</p>
	<p>Onsite Oral Presentations (B1) Digital Mental Health for Service Users</p> <p>Session Chair: Dr Anson TANG Associate Dean (Practical Education) cum Associate Professor, School of Nursing, Tung Wah College</p> <p>B01-1: <i>A Digital Wellness Tool for Service Users and the Wider Community: Insights from Local Integrated Community Centres for Mental Wellness</i> Harry CHUNG, Cindy YIU, & Peter HO New Life Psychiatric Rehabilitation Association, HKSAR, China</p> <p>B01-2: <i>The Effect of an e-Comprehensive Adolescent Mental Health Program (e-CAMP) on Mental Health Wellbeing for Adolescent – a Pilot Feasibility Study</i> Eliza Mi Ling WONG¹, Anson TANG¹, Simon Ching LAM¹, Andy CY CHONG¹, Hon Lon TAM², Regina LEE², Wai Kit WONG³, & Ben YIP¹</p>	<p>Venue: Rm1405, 14/F Online: [Zoom room B] Meeting ID: 913 4120 0738 Password: 222888</p>



	<p>¹School of Nursing, Tung Wah College, HKSAR, China ²Nethersole School of Nursing, The Chinese University of Hong Kong, HKSAR, China ³School of Nursing, Hong Kong Metropolitan University, HKSAR, China</p> <p>B01-3: <i>Robot-Assisted Emotional Support for Mental Health Improvement in Long-Stay Care Facility: A Project Proposal</i> Alice Mei Ling CHAN, Sin Yi HO, Pui Yu LAU, Sum Yi TSE, Yiu Hei CHEUNG, & Ka Nok HO School of Nursing, Tung Wah College, HKSAR, China</p>	
	<p>Onsite Oral Presentations (B2) Digital Mental Health for Personal Care</p> <p>Session Chair: Dr Larry AUYEUNG Assistant Professor, School of Arts and Humanities, Tung Wah College</p> <p>B02-1: <i>“Governing Exterior to Infer Inferior” 司外揣內, the Principle of Traditional Chinese Medicine to Explore Feasibility Integrating Artificial Intelligence for Early Detection and Treatment of Youth Mental Health Problems in Hong Kong: A Pilot Study</i> Margaret Wai Yan WONG, School of Nursing, Tung Wah College, HKSAR, China</p> <p>B02-2: <i>Integration of Traditional Chinese Medicine with Artificial Intelligence Smart Phone support to explore the feasibility for Early Detection and Treatment of Youth Mental Health Problems in Hong Kong: A Randomized, Controlled Prospective Longitudinal Cohort Study</i> Margaret Wai Yan WONG, School of Nursing, Tung Wah College, HKSAR, China</p> <p>B02-3: <i>Scrolling, Objectifying, and Eating: How Body Appreciation and Neutrality Break the Cycle</i> Cheuk Ying LAU, Larry AUYEUNG, & ZiKai LIN Tung Wah College, HKSAR, China</p> <p>B02-4: <i>Digital Mental Health in Aged Care: The Impact of Computer-Led Qigong on Brain Function in Visually Impaired Residents</i> Calvin Chi Kong YIP¹, Sze Ming Heidy CHEUNG², Kei Yui Yo Yo YAU³, Tsoi Ling Rachel LAI⁴, & On Nin Connie LEE⁴ ¹School of Medical and Health Sciences, Tung Wah College, HKSAR, China ²CFSC, HKSAR, China</p>	<p>Venue: Rm1506, 15/F Online: [Zoom room C] Meeting ID: 913 4121 9183 Password: 333111</p>



	<p>³SAHK, HKSAR, China ⁴HA, HKSAR, China</p> <p>Virtual Oral Presentations (V2) Virtual Nature</p> <p>Session Chair: Dr MA Suk Ling Associate Professor, School of Arts and Humanities, Tung Wah College</p> <p>V02-1: <i>The Potential of Virtual Nature for Youth Well-being: Opportunities and Challenges</i> Anna FORZATO¹, Eleonora Diletta SARCINELLA¹, Thomas ALBERS², & Alice CHIRICO¹ ¹ Research Center for Communication Psychology (PSICOM), Department of Psychology, Università Cattolica del Sacro Cuore, Milan, Italy ²ANATTA Foundation, Aalten, the Netherlands</p> <p>V02-2: <i>OURMIND 2.0 – SocialMind VR, Conflict Edition: Feasibility, Usability and Safety of a VR-based Soft-skills Training for Mentalization and Conflict Management in Young Adults</i> Flavia CRISTOFOLINI¹, Luca BERNARDELLI², Michel COMÈ³, Stefania GUASCO³, Roberto RAVERA³, & Andrea GAGGIOLI¹ ¹Research Center in Communication Psychology (PsiComPSICOM), Università Cattolica del Sacro Cuore, Milan, Italy ²BECOME Srl ³Digital Clinical Psychology Unit, Liguria Health Protection Agency</p> <p>V02-3: <i>Digital Nature Interventions for Stress Reduction: Comparing Virtual Reality and Traditional Guided Imagery</i> Astha ARORA¹, Alok Kumar GAURAV², & Vikas VR¹ ¹Department of Psychology, Central University of Karnataka, Kalaburagi, India ²Department of Public Administration, Central University of Karnataka, Kalaburagi, India</p> <p>V02-4: <i>Optimizing Relaxation: A Comparative Study of Nature Guided Imagery and Virtual Reality Assisted Nature Guided Imagery</i> Vikas VADAKKEPURAKKAL RAVI, Jaanvin, & Astha ARORA Central University of Karnataka, India</p>	<p>Venue: Rm1402, 14/F Online: [Zoom room D] Meeting ID: 949 3346 1287 Password: 555000</p>
16:00 – 16:15	Coffee, Networking, Transition	



<p>16:15 – 17:15</p>	<p>Symposium Session (S2) Digital Ageing Care: Research and Teaching Innovations at Hong Kong Baptist University</p> <p>S2-1: <i>Digital Cognitive Screening Platform for Older Adults</i> Ada FUNG Director of the Life Course Development Research Institute (LCDRI) Associate Professor of the Department of Sports and Health Sciences (SHS), Faculty of Arts and Social Sciences (FASS), Hong Kong Baptist University, HKSAR, China</p> <p>S2-2: <i>Virtual Representation and Digital Mental Health in Faith-Based Non-Government Organizations in Hong Kong</i> Ann Gillian CHU¹², & Rachel Siow ROBERTSON¹³ ¹ Research Fellow, Centre for Applied Ethics, Hong Kong Baptist University, HKSAR, China ² Visiting Research Fellow, Centre for Religion and Public Life, the University of Leeds ³ Assistant Professor, Academy of Chinese, History, Religion and Philosophy, Hong Kong Baptist University</p> <p>S2-3: <i>Bridging Learning and Care: Humanizing Practice</i> Helen CHIANG, Life Course Development Research Institute, Hong Kong Baptist University, HKSAR, China Division of Nursing Education, School of Continuing Education, Hong Kong Baptist University, HKSAR, China</p> <p>Moderator: Dr Ann Gillian CHU Hong Kong Baptist University, HKSAR, China</p>	<p>Venue: Lecture Theatre, 2/F Online: [Zoom room A] Meeting ID: 965 4729 8945 Password: 444777</p>
	<p>Onsite Oral Presentations (B3) Ethics for Digital Mental Health</p> <p>Session Chair: Dr Angela LI Associate Professor, School of Medical and Health Sciences, Tung Wah College</p> <p>B03-1: <i>Topic Mining and Evolutionary Analysis of Digital Mental Health Ethics Research Based on the BERTopic Model</i> Jie SONG, Yaling SHANG, Jiyixi HUA, Tianming BAI, Wenqi HUANG, & Zheng XU School of Philosophy and Sociology, Lanzhou University, Lanzhou, China</p> <p>B03-2: <i>Between Rights and Risk: Social Workers' Perspectives on Intimate Relationships and AI Robots for People with Intellectual Disabilities</i></p>	<p>Venue: Rm1405, 14/F Online: [Zoom room B] Meeting ID: 913 4120 0738 Password: 222888</p>



	<p>Yuk Kit Angus LAM¹, Benjamin Chi Ho FUNG², Ben Chi Bun YIP¹, & Calvin Chi Kong YIP¹ ¹Tung Wah College, HKSAR, China ²Hong Kong Nang Yan College of Higher Education, HKSAR, China</p> <p>B03-3: <i>Reorienting Digital Mental Health Ethics Through a Feminist Ethics of Care</i> Deanna HOLROYD, Akita International University, Japan</p> <p>B03-4: <i>AI Companions for Student Wellbeing in Hong Kong: Benefits, Risks and Safety Recommendations</i> Jasmine TSANG, School of Management, Tung Wah College, Hong Kong, HKSAR, China</p>	
	<p>Onsite Oral Presentations (B4) Applications of Functional Near-Infrared Spectroscopy (fNIRS)</p> <p>Session Chair: Dr Maggie LAM Assistant Professor, School of Medical and Health Sciences, Tung Wah College</p> <p>B04-1: <i>The Effects of Mindfulness-Based Music Therapy (MBMT) on Prefrontal Functional Connectivity in Healthy Young Adults Using Functional Near-Infrared Spectroscopy (fNIRS)</i> Armstrong Tat San CHIU¹, Calvin Chi Kong YIP², Ben Chi Bun YIP², Johnny Wen-tao LI⁴, Catherine Qiang-hui YIN⁴, Michael Chih Chien KUO², Winsy Wing Sze WONG³, & Sunny Ho-Wan CHAN⁵ ¹ The Hong Kong Society for the Blind, HKSAR, China ² School of Medical and Health Sciences, Tung Wah College, HKSAR, China ³ Department of Chinese and Bilingual Studies, Faculty of Humanities, The Hong Kong Polytechnic University, HKSAR, China ⁴ Department of Biomedical Engineering, Faculty of Engineering, The Hong Kong Polytechnic University, HKSAR, China ⁵ Centre for Health and Clinical Research, University of the West of England, Bristol, UK</p> <p>B04-2: <i>Digital Early Screening of Cognitive Declination-The Application of Functional Near-Infrared Spectroscopy (fNIRS) in Establishing Discriminative Cutoffs for Healthy Aging, Mild Cognitive Impairment, and Dementia Among Older Adults with Visual Impairments in Hong Kong</i> Armstrong Tat San CHIU¹, Wing Sze WONG², Chi Kong YIP³, Chi Bun YIP³, Hwei Lan TAN⁹, Zhifei LI⁴, Ho Yee NG², Tsz Yeung YIP⁷, Wing Cheong SZE¹, Hin Chung LAU⁷, Tat San CHIU¹, & Chung Man HO⁵⁶ ¹ The Hong Kong Society for the Blind, HKSAR, China ² Department of Chinese and Bilingual Studies, Faculty of Humanities, The Hong Kong Polytechnic University, HKSAR, China ³ School of Medical and Health Sciences, Tung Wah College, HKSAR, China ⁴ Department of Psychological Medicine, Yong Loo Lin School of</p>	<p>Venue: Rm1506, 15/F Online: [Zoom room C] Meeting ID: 913 4121 9183 Password: 333111</p>



	<p>Medicine, National University of Singapore, Singapore ⁵ Institute of Health Innovation and Technology (iHealthtech), National University of Singapore, Singapore ⁶ National University of Singapore (Suzhou) Research Institute, Suzhou, China ⁷ Department of Biomedical Engineering, The Hong Kong Polytechnic University, HKSAR, China ⁹ Department of Occupational Therapy, Singapore Institute of Technology, Singapore</p> <p>B04-3: <i>A Wearable EEG-Based Brain Monitoring Device for a Narrative-Based Cognitive Stimulation (NBCS)</i> <i>Program: A Trip of Memory</i> Armstrong Tat San CHIU¹, Hin-Chung LAU², Tsz Sun NG², Nok Man HO², King Yeung TAM², Chun Yu WONG², Ming Chung MA², Samel CHIEN⁵, Ka Keung WONG³, & Wing Sze WONG⁴ ¹ Residential Services, The Hong Kong Society for the Blind, HKSAR, China ² Department of Biomedical Engineering, The Hong Kong Polytechnic University, HKSAR, China ³ Department of Rehabilitation Sciences, Faculty of Health and Social Sciences, The Hong Kong Polytechnic University, HKSAR, China ⁴ Department of Chinese and Bilingual Studies, Faculty of Humanities, The Hong Kong Polytechnic University, HKSAR, China ⁵ Hong Kong College of Health Service Executives, HKSAR, China</p>	
	<p>Virtual Oral Presentations (V3) Advocating Digital Mental Health</p> <p>Session Chair:</p> <p>V03-1: <i>Revisiting Evidence in Digital Mental Health Governance: A Multimodal Approach to Patient Expression and Legal Qualification</i> Céline GAUTHIER-MAXENCE, & Carine MILCENT CNRS, Paris School of Economics (PSE), France</p> <p>V03-2: <i>Eco-Anxiety, Environmental Stressors, and Health Outcomes in Daily Life: A Multimodal Consumer Wearable Pilot Study</i> Jamal ALAM, Ahmad ABDELMOATY, & Ströckl Daniela ELISABETH Carinthia University of Applied Sciences, Austria</p> <p>V03-3: <i>The Captured Mind: A Theoretical Framework for Digital-Age Mental Health with Clinical Application in ADAPT</i> Chinonso Stanley EZEANYIKA, Lincolnshire Partnership NS Trust, United Kingdom</p> <p>V03-4: <i>Promoting Mental Wellbeing through Digital Advocacy: The Role of Lebona</i></p>	<p>Venue: Rm1402, 14/F Online: [Zoom room D] Meeting ID: 949 3346 1287 Password: 555000</p>



東華學院
TUNG WAH COLLEGE



	Yemisrach ELIAS, Mental health advocate, Ethiopia	
17:30 – 18:30	Networking Reception	Venue: Campus Square, 3/F
18:30	End of Day 1	—



東華學院
TUNG WAH COLLEGE



17 June (Day 2)

Date: 17 June 2026 (Wednesday), from 9:00 – 18:30

Address: Tung Wah College, King's Park Campus, Ma Kam Chan Memorial Building, 31 Wylie Road, Homantin, Hong Kong & live online

HK Time (HKT)	Activity	Venue & online link
09:00 – 09:30	Registration	Venue: Foyer, 2/F
09:30 – 10:15	Keynote Lecture (KL5) <i>Applications of Digital Technologies in Primary Mental Health Care</i> Keynote Speaker: Professor Ben FONG Professor of Practice, Faculty of Health and Social Sciences, The Hong Kong Polytechnic University, HKSAR, China Moderator: Dr Fowie NG Associate Professor, School of Management, Tung Wah College	Venue: Lecture Theatre, 2/F Online: [Zoom room A] Meeting ID: 965 4729 8945 Password: 444777
10:15 – 11:00	Keynote Lecture (KL6) <i>Using Empathic Computing to Address Mental Health Issues</i> Keynote Speaker: Professor Mark BILLINGHURST Professor, Adelaide University, University of Auckland Moderator: Professor Christopher LAI Dean and Professor, School of Medical and Health Sciences, Tung Wah College	Venue: Lecture Theatre, 2/F Online: [Zoom room A] Meeting ID: 965 4729 8945 Password: 444777
11:00 – 11:15	Coffee, Networking, Transition	—
11:15 – 12:00	Keynote Lecture (KL7) <i>User Experience Design for Cyberpsychology and Digital Wellbeing Applications</i> Keynote Speaker: Professor Andrea GAGGIOLI Full Professor at Università Cattolica del Sacro Cuore in Milan Moderator: Professor Alex CHAN Dean and Professor, School of Arts and Humanities, Tung Wah College	Venue: Lecture Theatre, 2/F Online: [Zoom room A] Meeting ID: 965 4729 8945 Password: 444777



<p>12:00 – 12:45</p>	<p>Keynote Lecture (KL8) <i>From Lab to Life: Engineering Scalable Digital Mental Health Solutions</i></p> <p>Keynote Speaker: Dr Donna BROWN Associate Director, Strategic Development (Biomedical Technology), Hong Kong Science and Technology Parks Corporation (HKSTP)</p> <p>Moderator: Professor Albert TEO Dean and Professor, School of Management, Tung Wah College</p>	<p>Venue: Lecture Theatre, 2/F Online: [Zoom room A] Meeting ID: 965 4729 8945 Password: 444777</p>
<p>12:45 – 14:00</p>	<p>Networking Lunch</p>	<p>Venue: Campus Square, 3/F</p>
	<p>Virtual Oral Presentations (V4) Artificial Intelligence and Mental Health</p> <p>Session Chair: Dr Iris SUN Assistant Professor, School of Arts and Humanities, Tung Wah College</p> <p>V04-1: <i>Artificial Intelligence, Real Anxiety: Navigating Digital Coping and Mental Well-being in Nursing Education</i> Alice YIP¹, Zoe TSUI¹, Jeff YIP², Ka Man Rachel YIP¹, & Chun Kit Jacky CHAN³ ¹Saint Francis University, HKSAR, China ²Tung Wah College, HKSAR, China ³Hong Kong Metropolitan University, HKSAR, China</p> <p>V04-2: <i>The Digital Therapeutic Alliance: A Qualitative Study of AI Chatbot Adoption and Emotional Trust Among Indian University Students</i> Shubham Kumar SINGH, IIT Hyderabad, India</p> <p>V04-3: <i>Human Cognition in the Age of Artificial Intelligence: An Integrative Review of Challenges, Adaptations, and Ethics</i> Pratima KAUSHIK, Aditi BHATIA School of Human Studies, Ambedkar University Delhi, India</p> <p>V04-4: <i>Classifying Delayed Affective Recovery from Daily-life Stress and Clinical Risk Stages using Passive and Active Contextual Measures: A Machine Learning Approach</i> Jun HU¹², Laura VAN HECK², Ji Young MIN², Dries VAN DIEVOORT², Yiqun GAN¹, Stephan CLAES³, Inez MYIN-GERMEYS², & Thomas VAESSEN²</p>	<p>Venue: Rm1405, 14/F Online: [Zoom room B] Meeting ID: 913 4120 0738 Password: 222888</p>



¹ Beijing Key Laboratory of Behavior and Mental Health, School of Psychological and Cognitive Sciences, Peking University, China
² Department of Neurosciences, Psychiatry Research Group, Center for Contextual Psychiatry, KU Leuven, Belgium
³ UPC KU Leuven, Belgium

V04-5:

“Molding Scrolls into Support: Assessing Feasibility and Mental Health Impact of Algorithm-Guided Healthy Feed Among Youth”: A Mixed Method Observational Study

Fariha JANNAT, Nazifa Yasmin NAZAH, Jannatul Mawa BIZLI, & Miftahul Nur MIM
Cumilla Medical College, Bangladesh

**Virtual Oral Presentations (V5)
Digital Mental Health for Adolescents and Youth**

Session Chair: Dr Beeto LEUNG
Assistant Professor, School of Arts and Humanities, Tung Wah College

V05-1:

Alexithymia and Smartphone Addiction Among Adolescents: Implications for Digital Mental Health in School Settings

MD. Faisal AHMED, Bangladesh Institute of Innovative Health Research, Bangladesh

V05-2:

Effectiveness of an Online Emotional Intelligence Training Program among Bangladeshi Youth: A Quasi-Experimental Study

MD. Faisal AHMED, Ashish PAUL, Mehreen Salim AURPA, Fairuz ABEDIN, Sinha AKTER, Ayesha MARIA, Prerna AGRAWAL, & Devi DAS
Department of Behavioral Science, Bangladesh Institute of Innovative Health Research, Bangladesh

V05-3:

Building Intrapersonal Strengths in University Students: Evidence from a Digital Well-being Intervention from India

C.K. JASEEL, Kamlesh SINGH
IIT Delhi, India

V05-4:

Building Resilient Minds through Co-creating a Digital Positive Psychology Intervention with Students in a Public University

Eugenia XATSE, University of Ghana, Ghana

Venue: Rm1402, 14/F

Online: **[Zoom room D]**

Meeting ID: 949 3346 1287

Password: 555000



	<p>V05-5: <i>Global MindBridge: A Multi-Interface Digital Mental Health Platform Integrating Validated Screening, Risk Flagging, and Community Referral Pathways for Underserved Populations</i> Victoria THOMAS, Safeguard Mental Health Initiative, Nigeria</p> <p>V05-6: <i>Targeting Psychosocial Support through mHealth: Insights from a Mobile Stress Management App for Cancer-Affected Populations in Vietnam</i> Qingpeng LIU¹, Margaux GRIVEL², Annie MA³, Zhongyue MA², Yuankai ZHANG², Hoang Dieu Anh LE⁴, Thanatcha NGOWJIRASAK⁵, Thu Huong DUONG⁶, Hong HUYNH⁶, Khanh Linh T. TRAN⁶, & PhuongThao D. LE⁵ ¹ Columbia University, New York, NY, USA ² School of Global Public Health, New York University, New York, NY, U.S.A. ³ Yale School of Public Health, New Haven, CT, U.S.A. ⁴ Boston College, Boston, MA, U.S.A. ⁵ School of Public Health, Boston University Boston, MA, U.S.A. ⁶ University of Medicine and Pharmacy - Ho Chi Minh City, Ho Chi Minh City, Vietnam</p>	
<p>14:00 – 15:00</p>	<p>Symposium Session (S3) Applications of Digital Technology in Supporting Care in the Communities: Case Presentations</p> <p>S3-1: <i>Exploring the Experiences of Older Adults at Risk of Falls in a Tele-Exercise Program: A Qualitative Study</i> Karly O. W. CHAN¹, Janet L.C. LEE², Peter P. YUEN¹, Ben Y.F. FONG¹, Vincent T.S. LAW¹, Fowie S.F. NG³, Wilson C.P. FUNG⁴, Tommy K.C. NG¹, I.S. CHEUNG¹ ¹College of Professional and Continuing Education, The Hong Kong Polytechnic University, HKSAR, China ² Department of Rehabilitation Sciences, The Hong Kong Polytechnic University, HKSAR, China ³School of Management, Tung Wah College, HKSAR, China ⁴Hong Kong Telemedicine Association, HKSAR, China</p> <p>S3-2: <i>Virtual Reality for Sustainable Practice of Hospice Care</i> Tammy Wan Yi IP¹, Wang-Kin CHIU², and Ben Yuk Fai FONG³ (Presenter: Wang-Kin Chiu) ¹Hong Kong College of Community Health Practitioners, China ²Division of Science, Engineering and Health Studies College of Professional and Continuing Education The Hong Kong Polytechnic University, HKSAR, China ³Faculty of Health and Social Sciences, The Hong Kong Polytechnic University, HKSAR, China</p>	<p>Venue: Lecture Theatre, 2/F Online: [Zoom room A] Meeting ID: 965 4729 8945 Password: 444777</p>



S3-3:

A Novel Integrated Systemic–Cerebrovascular Haemodynamic Index (ISCHI) Informs Mild Vascular Cognitive Impairment Risk in a Stroke-Free Healthy Ageing Population

Joseph A. ACKAH¹, Xiangyan CHEN²

¹Department of Health Technology and Informatics, The Hong Kong Polytechnic University, HKSAR, China

²Division of Science, Engineering, and Health Studies, College of Professional and Continuing Education, The Hong Kong Polytechnic University, HKSAR, China

Moderated by: Dr Kelly MA

Lecturer, Division of Science, Engineering, and Health Studies, College of Professional and Continuing Education, The Hong Kong Polytechnic University, HKSAR, China

**Onsite Oral Presentations (B5)
Systematic Review on Digital Mental Health**

Session Chair: Dr Wilson LEUNG

Assistant Professor, School of Nursing, Tung Wah College

B05-1:

Effectiveness of Nature-Based Immersive Virtual Reality on Health Outcomes in Breast Cancer Patients: A Systematic Review and Meta-Analysis

Judy Surui LIANG, Jing Jing SU, Winnie Wai In WONG, & Rick Yiu Cho KWAN

School of Nursing, Tung Wah College, Hong Kong, HKSAR

B05-2:

Effectiveness of Digital Serious Games on Knowledge and Attitudes in Public Health Education: A Systematic Review and Bayesian Network Meta-analysis

Di HUANG, Wendy MOYLE

Griffith University, Australia

B05-3:

Natural Language Processing Application in Electronic Health Records Studies for Psychosis: A Systematic Review

Harry Kam Hung TSUI¹, Rachel Hei Lam HO¹, Sophia VANN-ADIBE¹, Wing Yan Vivian TSANG¹, Huiquan ZHOU¹, Hon-Cheong SO², Qingpeng ZHANG^{3,4}, & Sherry Kit Wa CHAN^{1,5}

¹Department of Psychiatry, Li Ka Shing Faculty of Medicine, The University of Hong Kong, HKSAR, China

²School of Biomedical Sciences, Faculty of Medicine, The Chinese University of Hong Kong, HKSAR, China

³Musketeers Foundation Institute of Data Science, The University of Hong Kong, HKSAR, China

⁴Department of Pharmacology and Pharmacy, Li Ka Shing Faculty of Medicine, The University of Hong Kong, HKSAR, China SAR

⁵Department of Psychiatry, Queen Mary Hospital, HKSAR, China

Venue: Rm1405, 14/F

Online: [Zoom room B]

Meeting ID: 913 4120 0738

Password: 222888



	<p>B05-4: <i>Artificial Intelligence–Based Versus Human-Delivered Mental Health Interventions: A Systematic Review and Network Meta-Analysis of Randomized Controlled Trials</i> Harry Kam Hung TSUI, Ciren ZHOUMA, Michelle LAM, & Sherry Kit Wa CHAN The University of Hong Kong, HKSAR, China</p>	
	<p>Onsite Oral Presentations (B6) Digital Mental Health for Various Target Groups</p> <p>Session Chair: Dr Katherine YAU Assistant Professor, School of Nursing, Tung Wah College</p> <p>B06-1: <i>Effectiveness and Cost-effectiveness of An App-based Mindfulness Breast Care Program to Reduce Body Image Distress and Stigma for Breast Cancer Survivors: Randomized Controlled Trial</i> Jiemin ZHU¹, Huicong LIN¹², Yujing ZHONG¹, Shuang ZHENG¹³, Yun XU⁴, Xiaoying JIANG⁵, Sally CHAN⁶, Shengjie LIU¹⁷, Ka Ming CHOW¹⁸, & Jiemin ZHU¹⁹ ¹Department of Nursing, School of Medicine, Xiamen University, Xiamen, China ²Department of Obstetrics and Gynecology, Women and Children's Hospital, School of Medicine, Xiamen University, Fujian, China ³Department of Nuclear Medicine, General Hospital of Central Theater Command, Wuhan, China ⁴Mental Health and Research Center, Nanjing University, China ⁵School of Nursing, Fujian Medical University, Fuzhou, China ⁶Tung Wah College, HKSAR, China ⁷Department of Thyroid and Breast Surgery, Weifang People's Hospital, The First Affiliated Hospital of Weifang Medical University, Weifang, China ⁸The Nethersole School of Nursing, Faculty of Medicine, The Chinese University of Hong Kong, HKSAR, China ⁹Department of Nursing, Women and Children's Hospital, School of Medicine, Xiamen University, Fujian, China</p> <p>B06-2: <i>The Utilization of Online Self-helping Modules in Prevention of Common Mental Health Issues among Men in Hong Kong</i> Catherine K. Y. LEE, The Mental Health Association of Hong Kong, HKSAR, China</p> <p>B06-3: <i>Digital Mental Health Without Smartphones: A Bluetooth-Enabled Reminiscence Intervention for Institutionalized Older Adults</i> Yin Chun Mabel YAU¹, Mei Kwan Sabrina CHAN¹, Chun Hin Jeffery KO¹, Ka Chai Kelvin CHEUNG², & Pak Lai TANG³ ¹Tung Wah College, HKSAR, China ²Hospital Authority, HKSAR, China ³Independent Researcher, HKSAR, China</p>	<p>Venue: Rm1506, 15/F Online: [Zoom room C] Meeting ID: 913 4121 9183 Password: 333111</p>



	<p>B06-4: <i>The Application of Functional Near Infrared Spectroscopy (fNIRS) in the Diagnosis of Attention Deficit and Hyperactivity Disorder (ADHD) in Children and Adolescents</i> Roger HO, Hong Kong University of Science and Technology, HKSAR, China</p>	
	<p>Virtual Oral Presentations (V6) DMH Applications Across Diverse Settings</p> <p>Session Chair: Dr KANG Weixi Assistant Professor, School of Arts and Humanities, Tung Wah College</p> <p>V06-1: <i>A ‘Walkthrough’ Investigation of the Interactional and Semiotic Architecture of a Teleconsultation App</i> Meredian ALAM, University of Brunei Darussalam, Brunei Darussalam</p> <p>V06-2: <i>Trends and Factors related to Use of Remote Appointments in Community-based Mental Health Care</i> Vicki MYERS^{1,2}, Clara SINGER², Havi MURAD², Arnona ZIV², Rachel WILF-MIRON¹, & Arad KODESH³ ¹Tel Aviv University, Israel ²Gertner Institute of Health Policy Research, Sheba Medical Center, Israel ³University of Haifa and Meuhedet Health Services, Israel</p> <p>V06-3: <i>Digital Media Multitasking and its Association with Cognitive Load in Bangladeshi Medical Students: A Cross Sectional Study</i> Md Hasibul Islam SIFAT¹, Most. Erfat Jahan LUBNA¹, Tanima AHMED, Sanjida Islam SHUMA¹, Md. Sajidul ISLAM¹, Tahsin Ara MIM², & Asfiatush SADIYA² ¹ Mymensingh Medical College, Bangladesh ² Rajshahi Medical College, Bangladesh</p> <p>V06-4: <i>A Systematic Review of Research Trends in App-Based Interventions for Suicidal Ideation</i> Ridhi KAMRA, & Swati PATHAK Christ (Deemed to be) University, Delhi NCR Campus, India</p>	<p>Venue: Rm1402, 14/F Online: [Zoom room D] Meeting ID: 949 3346 1287 Password: 555000</p>
<p>15:00 – 15:15</p>	<p>Coffee, Networking, Transition</p>	<p>—</p>



15:15 – 16:15	<p>Symposium Session (S4) <i>How Assistive Technology Bridges the Gap in Mental Health Support</i></p> <p>[TBC]</p> <p>Moderator: Dr Donna BROWN Associate Director, Strategic Development (Biomedical Technology), Hong Kong Science and Technology Parks Corporation (HKSTP)</p>	<p>Venue: Lecture Theatre, 2/F Online: [Zoom room A] Meeting ID: 965 4729 8945 Password: 444777</p>
	<p>Onsite Oral Presentations (B7) Access and Reach of Digital Mental Health</p> <p>Session Chair: Dr Florence WONG Associate Professor, School of Nursing, Tung Wah College</p> <p>B07-1: <i>Helping Profession Status and Internet Access Contexts Among Adults Aged 50+: Implications for Real-Life Digital Mental Health Reach</i> Patrick Ho Lam LAI, University of Oklahoma, United States</p> <p>B07-2: <i>Functional Difficulty and Digital Access Ecologies Among Middle-aged and Older Adults: Implications for Reach and Retention in Digital Mental Health</i> Patrick Ho Lam LAI, University of Oklahoma, United States</p> <p>B07-3: <i>Heterogeneous Multi-Stream Fusion for Depression Severity Estimation from Webcam rPPG and Facial Gestures</i> Ethan Shiu Wang CHENG¹, Duo Wai-chi WONG^{1,3}, & James Chung-wai CHEUNG^{1,2,3} ¹Department of Biomedical Engineering, Faculty of Engineering, The Hong Kong Polytechnic University, Hong Kong SAR, China; ²Research Institute for Smart Ageing, The Hong Kong Polytechnic University, Hong Kong SAR, China; The Hong Kong Polytechnic University, HKSAR, China</p> <p>B07-4: <i>Interpretable Geometric Biomarkers for Digital Mental Health: Hyperbolic Analysis of Depression-Related Semantic Networks</i> Demetrios AGOURAKIS, São Leopoldo Mandic Medical School, Brazil</p>	<p>Venue: Rm1405, 14/F Online: [Zoom room B] Meeting ID: 913 4120 0738 Password: 222888</p>
	<p>Onsite Oral resentations (B8) Digital Mental Health Practices</p> <p>Session Chair: Dr Jingjing SU Assistant Professor, School of Nursing, Tung Wah College</p>	<p>Venue: Rm1506, 15/F Online: [Zoom room C] Meeting ID: 913 4121 9183 Password: 333111</p>



<p>B08-1: <i>Designing an AI-Enabled Narrative Therapy Chatbot for Neurodiverse Adolescents in Hong Kong</i> Hoyee AU-YEUNG¹, Simon Tak Mau CHAN¹, Yu Hoi Wa Christina YU¹, Chi Yeung Victor LAU², & Bruce NATHANIEL³ ¹Saint Francis University, HKSAR, China ²Evangel College, HKSAR, China ³Gratia Christian College, HKSAR, China</p> <p>B08-2: <i>From Virtual to Real-World Impact: Leveraging Fandom Communities for Digital Mental Health Interventions</i> Maria Bernadett CARANDANG, Mary Mediatrix Medical Center, Philippines</p> <p>B08-3: <i>“Be a Teammate with Yourself”: Participant Experiences in a Web-based Psychoeducation Program for Trauma and Dissociation</i> Chak Hei Ocean HUANG¹, Cherry Tin Yan CHEUNG², Stanley Kam Ki LAM³, & Hong Wang FUNG⁴ ¹Department of Social Work and Social Administration, The University of Hong Kong, HKSAR, China ²Department of Social Work, Hong Kong Baptist University, HKSAR, China ³School of Nursing and Health Sciences, Hong Kong Metropolitan University, HKSAR, China ⁴School of Nursing, The Hong Kong Polytechnic University, HKSAR, China</p> <p>B08-4: <i>Interaction-Level Behavioral Signals of Stress and Anxiety in Short-Form Video Use: An Exploratory Study</i> Yanqing LIU, & Yucheng JIN Duke Kunshan University, China</p>	
---	--

<p>Virtual Oral Presentations (V7) DMH and Psychophysiological Research</p> <p>Session Chair: Ms Claire KAN Lecturer, School of Arts and Humanities, Tung Wah College</p> <p>V07-1: <i>Physiological Digital Phenotypes of Daily Stress Regulation and Mental Health Symptoms</i> Laura VAN HECK¹, Thomas VAESSEN¹², Ruud Van STIPHOUT³, Marlies HOUBEN¹⁴, & Inez MYIN-GERMEYS¹ ¹KU Leuven, Belgium ²University of Twente, Netherlands ³OnePlanet, Netherlands ⁴Tilburg University, Netherlands</p>	
---	--

<p>Venue: Rm1402, 14/F Online: [Zoom room D] Meeting ID: 949 3346 1287 Password: 555000</p>
--



	<p>V07-2: <i>Digital Dependence and Stress Reactivity: A Psychophysiological Study Using Galvanic Skin Response</i> Astha ARORA, Alok Kumar GAURAV, & Jaanvin SHAHJI Central University of Karnataka, Kalaburagi, India</p> <p>V07-3: <i>Exploring the Influence of Digital Dependence on Behavioural and Physiological Responses through Galvanic skin responses related to cognitions</i> Jaanvin JAANVIN, Vikas V R, Astha ARORA, & Sneha PRAKASH Central University of Karnataka, India</p> <p>V07-4: <i>Psychological Effects of Virtual Reality Biophilic Interventions Among Workers: A Systematic Review and Meta-Analysis</i> Amna SAJJAD, & Haziq MAHMOOD University of Management and Technology, Lahore, Pakistan</p>	
16:15 – 16:30	Coffee, Networking, Transition	—
16:30 – 17:30	<p>Onsite Oral Presentations (B9) Digital Mental Health and Well-being</p> <p>Session Chair: Dr Cathy HUNG Assistant Professor, School of Arts and Humanities, Tung Wah College</p> <p>B09-1: <i>Understanding International Students' Mental Health and Wellbeing: An Ecological Approach</i> Hei Man SHEK¹, Regina Lai Tong LEE¹, Sally Wai Chi CHAN², & Michelle STUBBS¹ ¹The University of Newcastle, Australia ²Tung Wah College, Hong Kong</p> <p>B09-2: <i>Digital Communication, Built Environment, and Health: Impacts on Personal Wellbeing During the Pandemic</i> Chunlan GUO, Collaborating Centre for Oxford University and CUHK for Disaster and Medical Humanitarian Response, HKSAR, China</p> <p>B09-3: <i>Digital Spirituality, Mental Well-being and its Implications — Auto-ethnographic Narrative Inquiry Research in a Time of (Post-)Pandemic</i> Anson M.C. SINN, Independent Scholar, HKSAR, China</p>	<p>Venue: Lecture Theatre, 2/F Online: [Zoom room A] Meeting ID: 965 4729 8945 Password: 444777</p>



	<p>B09-4: <i>Secret Chat: Co-creating Digital Mental Health Initiative for HKDSE Students in Community</i> Po Yan CHENG, Karen Kit Ling YIU, & Dora Ching Ching NGAN The Hong Kong Council of Social Service, HKSAR, China</p>	
	<p>Onsite Oral Presentations (B10) Social Media Usage</p> <p>Session Chair: Ms Jenny LEE Lecturer, School of Arts and Humanities, Tung Wah College</p> <p>B10-1: <i>Smartphone Addiction and Interpersonal Relationships as Mediators of the Relationship Between Family Functioning and Youths' Loneliness</i> Raymond Chi-Fai CHUI, & Cherry Chong-Ching CHIU Hong Kong Shue Yan University, HKSAR, China</p> <p>B10-2: <i>Social Media Usage, Self-Efficacy, Social Connection, and Life Satisfaction in Hong Kong Older Adults</i> Raymond Chi-Fai CHUI, & Joe Tsun Hin YIU Hong Kong Shue Yan University, HKSAR, China</p> <p>B10-3: <i>Exploring the Relationships between Parent-youth Relationship, Parental Mediation, Youth Social Media Use, and Well-being</i> Raymond Chi-Fai CHUI, & Yan-Tung SHUM Hong Kong Shue Yan University, HKSAR, China</p> <p>B10-4: <i>An Investigation of the Associations of Social Media Use with Anxiety and Depression: A Cross-sectional Study of Youth in Hong Kong</i> Louis LAM¹, & Cheuk Ki LAM² ¹School of Management, Tung Wah College, HKSAR, China ²Korean International School, HKSAR, China</p>	<p>Venue: Rm1405, 14/F Online: [Zoom room B] Meeting ID: 913 4120 0738 Password: 222888</p>
	<p>Onsite Oral Presentations (B11) Mental Health in Africa</p> <p>Session Chair: Dr Stephen CHAN Assistant Professor, School of Arts and Humanities, Tung Wah College</p> <p>B11-1: <i>Reconfiguring Mental Health Authority in the Global South: Mapping of Influencer Knowledge, Misinformation, and Perception Shifts: A South African case study</i> Rejoice VAN DER WALT¹, & Patson MALISA²</p>	<p>Venue: Rm1506, 15/F Online: [Zoom room C] Meeting ID: 913 4121 9183 Password: 333111</p>



<p>¹Wits University, South Africa ²Patsonmalisa Foundation, South Africa</p> <p>B11-2: (online) <i>A Structured Hybrid Model for Digital Mental Health in Schools and Communities: A Quantitative Study</i> Ukhona KWANANA, Mental Matters Initiative - Imbokodo Yabathembu Women's League & Management College of Southern Africa, South Africa</p> <p>B11-3: (online) <i>Assessment of Post-traumatic Stress Disorder and Well-being among Sudanese during The Ongoing War: A Cross-sectional Study</i> Basma TOLBA, Mohamed Fakhry HUSSEIN, Marina SALEEB, Yasmine Yousry MOHAMED, Assem GEBREAL, Abuelgasim Osman Alemam MOHAMED, Faisal Saeed AL-QAHTANI, Fatima Mohamed Osman YASIN, Omelhassan Abdelgader ALAWED, & Ramy Mohamed GHAZY Princess Fatma Academy (PFA) for Contentious Medical Education, Cairo, Egypt</p>	
<p>Virtual Oral Presentations (V8) Digital Mental Health for Youth</p> <p>Session Chair: (TBC)</p> <p>V08-1: <i>Kalmer: Design and Preliminary Evaluation of a DBT-informed Ecological Momentary Intervention for Non-suicidal Self-injury in Youth</i> Daniel VEGA¹, Anna JULIÀ MAS-SARDÀ², Irene JAÉN PARRILLA³, Angels CALVET⁴, Mónica CONESA GIMÉNEZ⁵, Juan C PASCUAL⁶, Anna SINTES ESTÉVEZ⁷, Anaís LARA⁸, Iria MÉNDEZ⁹, Soledad ROMERO¹⁰, Joaquim PUNTÍ VIDAL¹¹, Joaquim SOLER RIBAUDI¹², Jordi SOLÉ-CASALS¹³, Marina LÓPEZ-SOLÀ⁴, & Azucena GARCÍA-PALACIOS⁵</p> <p>¹ Consorci Sanitari de l'Anoia, Spain ² Fundació Sanitària d'Igualada, Spain ³ Department of Developmental, Educational, Social and Methodology Psychology, Universitat Jaume I, Spain ⁴ Neuropsychology and Neuroimaging Group, IDIBAPS, Institute of Neurosciences, University of Barcelona, Spain ⁵ Department of Basic and Clinical Psychology and Psychobiology, Universitat Jaume I, Spain ⁶ Mental Health and Psychiatry Department, Vic Hospital Consortium, Spain ⁷ Servicio de Psiquiatría y Psicología, Hospital Sant Joan de Déu Barcelona, Spain ⁸ Servicio de Salud Mental Infanto Juvenil, ALTHAIA, Xarxa Assistencial Universitària de Manresa, Spain ⁹ Servei de Psiquiatria & Psicologia Infantil Juvenil, Hospital Universitari Mútua de Terrassa, Fundació Recerca Mútua de Terrassa, Spain ¹⁰ Department of Child and Adolescent Psychiatry and Psychology, Institute of Neuroscience, Hospital Clínic de Barcelona, Spain ¹¹ Salut Mental, Corporació Sanitària Parc Taulí de Sabadell, Spain</p>	<p>Venue: Rm1402, 14/F Online: [Zoom room D] Meeting ID: 949 3346 1287 Password: 555000</p>



	<p>¹² Department of Psychiatry, Hospital de la Santa Creu i Sant Pau, Institut d'Investigació Biomèdica-Sant Pau, Spain ¹³ Data and Signal Processing Group, Universitat de Vic - Universitat Central de Catalunya, Spain</p> <p>V08-2: <i>Digital Mental Health Interventions for At-Risk Youth: A Framework for Equitable Access and Engagement in Underserved Communities</i> Linda SITATI¹, & Calistus WEKESA¹² ¹ Afya Care Foundation, Kenya ² Tuwan Highway Mission Hospital</p> <p>V08-3: <i>Digital Empathy as a Protective Factor in Adolescent Online Behaviour: A School-Based Preventive Intervention Study</i> Olga LUTSENKO, Novosibirsk State Pedagogical University, Russia</p> <p>V08-4: <i>Digital Literacy as a Protective Mechanism in Youth Digital Mental Health</i> Ayse Asli SEZGIN BUYUKALACA, Cukurova University, Turkiye</p>	
17:30 – 18:30	Networking Reception	Venue: Campus Square, 3/F
18:30	End of Day 2	—



東華學院
TUNG WAH COLLEGE



18 June (Day 3)

Date: 18 June 2026 (Thursday), from 9:00 – 17:30

Address: Tung Wah College, King's Park Campus, Ma Kam Chan Memorial Building, 31 Wylie Road, Homantin, Hong Kong & live online

HK Time (HKT)	Activity	Venue & online link
09:00 – 09:30	Registration	Venue: Foyer, 2/F
09:30 – 10:30	<p>Symposium Session (S5) Digital Technologies for Promoting Mental Health: Examples from Hospitals to the Community</p> <p>S5-1: <i>A Trial Study that Utilizes Digital Imagery Technology to Manage Post-Operational Delirium</i> Eric TAM, Associate Director of Jockey Club Smart Ageing Hub & Member of Research Institute for Smart Ageing, The Hong Kong Polytechnic University, HKSAR, China</p> <p>S5-2: <i>Integrating Home-Based Digital Self-Monitoring to Enhance Metabolic and Psychosomatic Health in Older Adults: A Holistic Model</i> Karen Siu-Lan CHEUNG, Adjunct Associate Professor, WHO Collaborating Centre (WHO CC) for Community Health Services, School of Nursing, The Hong Kong Polytechnic University, HKSAR, China</p> <p>S5-3: <i>The Use of Interactive Media in Immersive Art Based on Acceptance and Commitment Therapy: A Psychoeducation Approach</i> Ka Ho TONG, Assistant Professor, Department of Counselling & Psychology, Hong Kong Shue Yan University, HKSAR, China</p> <p>Moderator: Dr Bobo LAU Associate Professor, Department of Counselling & Psychology, Hong Kong Shue Yan University</p>	<p>Venue: Lecture Theatre, 2/F Online: [Zoom room A] Meeting ID: 965 4729 8945 Password: 444777</p>
	<p>Onsite Oral Presentations (B12) Practical Strategies for Adopting DMH</p> <p>Session Chair: Dr Leonia LAU Assistant Professor, School of Nursing, Tung Wah College</p> <p>B12-1: <i>Digital versus In-person Delivery of a School-Based Mindfulness and Ba Duan Jin Program for Adolescent Mental Health: A Mixed-Methods Comparative Study</i> Yiu Hsuan Vincent YEUNG, Mind Matters Academy, HKSAR, China</p>	<p>Venue: Rm1405, 14/F Online: [Zoom room B] Meeting ID: 913 4120 0738 Password: 222888</p>



	<p>B12-2: <i>Shifting Mindset in a Digital World: Practical Strategies for Confidence, Communication, and Mental Well-Being</i> Tiffany R. HARRIS, SHIFT YOUR MINDSET & DREAM BIG LLC, United States</p> <p>B12-3: <i>What Psychological Dependency Patterns Emerge when Users Treat GPT as a Companion for Personal Reflection or Crisis Coping</i> Deepali MOHANTA ¹, Keeranmit Kiranmeet KAUR ², & Arpita NAYAK ³ ¹ Psychohub Institute of Psychology and Wellness, India ² Mata Sundri College for Women, University of Delhi, India ³ Umeeid, India</p>	
	<p>Onsite Oral Presentations (B13) Inclusivity of DMH</p> <p>Session Chair: Dr Angus LAM Assistant Professor, School of Medical and Health Science, Tung Wah College</p> <p>B13-1: <i>Developing AI Assistive Technology in African Languages for Neurodivergent Children: Enhancing Learning and Social Engagement in Rwanda</i> Abimbola Rahman AKINYEMI, ISSUP, Rwanda</p> <p>B13-2: <i>Beyond Reach: Implementation Lessons from Participatory Co-design and Peer Support in a Digital Mental Health Intervention for Vulnerable Youth in Colombia</i> Andrea BELLO-TOCANCIPÁ¹, Mauricio AVENDAÑO², Martha ESCOBAR-LUX¹, Fabio IDROBO¹, Armando MEIER³, Naomi KOERNER⁴, Nathalie MONNET², Clemence KIENY², & Ricardo ARAYA⁵ ¹ Santa Fe de Bogotá Foundation, Colombia ² University of Lausanne, Switzerland ³ University of Basel, Switzerland ⁴ Toronto Metropolitan University, Canada ⁵ King's College London, UK</p> <p>B13-3: <i>Mindful Tech: Ethics and Policies in Digital Mental Health</i> Yosra MORSY, Oasis Psychology Creations, Egypt</p> <p>B13-4: (Online) <i>Breaking the Silence: Digital Mental Health, Intersectionality, and Language Deprivation Among Deaf Women and Girls in Rural Kenya</i> Grace AREBA, & Nancy AKINYI Chanuka Deaf Women Group, Kenya</p>	<p>Venue: Rm1506, 15/F Online: [Zoom room C] Meeting ID: 913 4121 9183 Password: 333111</p>



	<p>Virtual Oral Presentations (V9) DMH, Engagement and Support</p> <p>Session Chair: Mr Ivan FUNG Senior Lecturer, School of Arts and Humanities, Tung Wah College</p> <p>V09-1: <i>Fostering Accessibility, Independence, Confidence, and Reduced Anxiety: STEM Students' Engagement with AI in Their College-to-work Process</i> Sherri TURNER, Katelyn R. NIZNIK, & Anne HINDERLITER University of Minnesota, United States</p> <p>V09-2: <i>Artificial Intelligence for Mental Health Support: A Global Systematic Review of Opportunities, Effectiveness, and Ethical Concerns</i> Shivanshi MISHRA, Amity Institute of Behavioural and Allied Sciences, Amity University Lucknow, India</p> <p>V09-3: <i>Celeste: A Virtual Garden for Adolescent Mental Health Support</i> Joyce LIU, & Allen OLSON-URTECHO Studio Bahia, United States</p>	<p>Venue: Rm1402, 14/F Online: [Zoom room D] Meeting ID: 949 3346 1287 Password: 555000</p>
10:30 – 10:45	Coffee, Networking, Transition	—
10:45 – 11:45	<p>Symposium Session (S6) <i>AI-Enabled Mental Health Services: Research and Reflections</i></p> <p>Professor Rick KWAN^{1,2}, Dr Fowie NG³, & Mr Kevin YEUNG⁴ ¹Associate Vice President (Academic), Tung Wah College ²Associate Dean (Programmes), School of Nursing, Tung Wah College ³Associate Professor, School of Management, Tung Wah College ⁴Radiance Tech Int'l Ltd.</p> <p>Moderator: Professor Will MA Professor, School of Arts and Humanities, Tung Wah College Director of the Centre for Innovative Teaching and Learning (CITL)</p>	<p>Venue: Lecture Theatre, 2/F Online: [Zoom room A] Meeting ID: 965 4729 8945 Password: 444777</p>
	<p>Virtual Oral Presentations (V10) Digital Mental Health and Resilience</p> <p>Session Chair: Dr Elaine Lau Head of Graduate Research Office, Tung Wah College</p>	<p>Venue: Rm1405, 14/F Online: [Zoom room B] Meeting ID: 913 4120 0738 Password: 222888</p>



	<p>V10-1: <i>SafeScroll: A Machine Learning-Enhanced Browser Extension for Real-Time Trauma Trigger Detection and Content Filtering</i> Ananya PATEL, Pine Crest School, United States</p> <p>V10-2: <i>Resilience and Recovery as Protective Resources in Digital Mental Health Practice: Evidence from EAP Therapists</i> Steffanie GRIMES, 1to1help.com, India</p> <p>V10-3: <i>The Role of Resilience and Social Support in Protecting Adolescents from Academic Stress and Suicidal Ideation in Malaysia and India</i> Aqeel KHAN, Universiti Teknologi Malaysia, Malaysia</p> <p>V10-4: <i>Trauma in the Feed: A Thematic Analysis of Trauma Narratives in YouTube Podcasts and Audience Comments within Digital Mental Health</i> Manvendra SINGH, Banaras Hindu University, India</p>	
	<p>Virtual Oral Presentations (V11) Digital Mental Health Around the World I</p> <p>Session Chair: Dr Judy LIANG Assistant Professor, School of Nursing, Tung Wah College</p> <p>V11-1: <i>An Exploratory Sub-group Analysis of Demographic and Technical Moderators in a Digital Mental Health E-writing Therapy Intervention</i> Ying Qin TEE, & Zainudin HASSAN University of Technology Malaysia, Malaysia</p> <p>V11-2: <i>Evolving Trends in Technology-Based Suicide Prevention Research: A Pre- and Post-AI Boom Comparison Study</i> Sayed Ebrahim MUBASHEER SM¹, Prakhar SRIVASTAVA², & Samina BANO³ ¹Jamia Millia Islamia, New Delhi, India ²Annecy Behavioral Science Lab, France ³Department of Psychology, Jamia Millia Islamia, New Delhi, India</p> <p>V11-3: <i>Narratives of Now: A Digital Expressive Writing Group Therapy Program for Anxiety in Young Adults</i> Vidushi ARYA¹, Prisha SHARMA¹, & Vasundhara S. NAIR² ¹M.Sc. Psychosocial Rehabilitation, India ²Jindal Institute of Behavioural Sciences, India</p>	<p>Venue: Rm1402, 14/F Online: [Zoom room D] Meeting ID: 949 3346 1287 Password: 555000</p>
11:45 – 14:00	Networking Lunch	Venue: Campus Square, 3/F



Virtual Oral Presentations (V12)
Digital Mental Health Around the World II

Session Chair: (TBC)

V12-1:
Digital Companionship and Psychological Need Satisfaction in Later Life: An Integrative Review Guided by Self-Determination Theory

Yaling SHANG, Jie SONG, Jiyixi HUA, & Zheng XU
School of Philosophy and Sociology, Lanzhou University, China

V12-2:
Problematic Smartphone Use Among Adolescents in Asia: A Scoping Review of Mental Health Outcomes (2015-2025)

Fung CHIN, University of Auckland, New Zealand

V12-3:
Qualitative Exploration of Grief, Digital Bonds, and the Psychological Weight of the Digital Afterlife

Vinorra SHAKER, Asia Pacific University of Technology & Innovation (APU), Malaysia

V12-4:
From Distress to BMI: Examining Digital Mental Health Targets Through Decision-Making and Inhibitory Control Mechanisms

Simran DHANKAR¹, Sanjeev P. SAHNI², & Mohita JUNNARKAR¹

¹ OP Jindal Global University, Sonapat, India

² Sumona Institute of Behavioural Sciences, India

V12-5:
Cognitive Fatigue in Functional and Recreational Digital Engagement: A Thematic Analysis of Underlying Mechanisms

Shrishti TIWARI, Symbiosis Institute of Health Sciences, India

V12-6:
Bridging the Research-to-Practice Gap: A Systematic Review of Psychometric Rigor in Digital Mental Health Assessments for Real-World Implementation

Prabhleen ARORA, Manish Kumar VERMA

Lovely Professional University, India

V12-7:
Analyzing the Significant Positive Correlation between Screen Time Metrics and Insomnia Symptoms using EEG & PSG

Mukul JAIN, & Nil PATIL

Mind Lab, Research and Development Cell, Parul University, India

Venue: Rm1402, 14/F

Online: [Zoom room D]

Meeting ID: 949 3346 1287

Password: 555000



	<p>V12-8: <i>Same Group, Different Mediums: An Integrative Embodied Approach to Trauma in In-Person vs Online Settings</i> Shomoa SABRY Egyptian Psychotherapists Association, Egypt</p> <p>V12-9: <i>Academic Self-efficacy Predicts Semester GPA in Undergraduate Nursing Students: A Multiple Regression Study</i> Radini WEERATHUNGA, Walpita Gamage Chandima KUMARA, Wasana Saranga SUDUSINGHE, Kalapuge Dona Chamanthi Darshika JAYATHILAKA, Akurogoda Gamage Ruwindi Rasanjalie GUNATHILAKA, Yogendra LARUKSHA, & Panapitiya Kankanamalage Dona Therani Nimasha DHARMADASA General Sir John Kotelawala Defence University, Sri Lanka</p>	
	<p>Virtual Oral Presentations (V13) DMH Reserach in Thailand</p> <p>Session Chair: (TBC)</p> <p>V13-1: <i>Tor-Term-Jai (Refill the Heart): A Culturally Adapted, Nurse-Guided Digital Mental Health Intervention for Thailand</i> Kedsaraporn KENBUBPHA¹, Aphichaya POLRAK², Dutsadee JEUNGSIRAGULWIT³, & Apisit CHAROENSUK ¹Boromarajonani College of Nursing, Sapphasithiprasong, Thailand ²Prasrimahabohidi Psychiatric Hospital, Thailand ³Department of Mental Health, Ministry of Public Health, Thailand</p> <p>V13-2: <i>Empowering Future Nurses: A Task-Shifting Model for the "Tor-Term-Jai" Digital Mental Health Intervention in Thailand</i> Buppha JAIMUN, Boromarajonani College of Nursing Sunpasithiprasong, Thailand</p> <p>V13-3: <i>Cultural Adaptation of the WHO 'Step-by-Step' Digital Mental Health Intervention for Depression in Thailand</i> Anongluk VONGTREE, Boromarajonani College of Nursing, Sanpasithiprasong, Thailand</p> <p>V13-4: <i>Addressing Mental Health Vulnerability in Thai Youth: Evaluation of a Stratified Digital Intervention Using the "Tor-Term-Jai" Platform</i> Wichitra CHITRAK, Boromarajonani College of Nursing Sanpasithiprasong, Thailand</p>	<p>Venue: Rm1405, 14/F Online: [Zoom room B] Meeting ID: 913 4120 0738 Password: 222888</p>



	<p>V13-5: <i>Expanding "Tor-Term-Jai" (Refill the Heart): A Nurse-Guided Digital Intervention for Mental Health and Resilience in Thai Adults</i> Kedsaraporn KENBUBPHA, Aphichaya POLRAK, Dutsadee JEUNGSIRAGULWIT, & Apisit Charoensuk Nannaphat SINGKAEW Boromarajonani College of Nursing, Sunpasitthiprasong, Faculty of Nursing, Praboromarajchanok Institute, Thailand</p> <p>V13-6: <i>Bridging the Digital Divide in Geriatric Mental Health: Quantitative and Qualitative Evaluation of the "Tor-Term-Jai" Platform among Thai Seniors</i> Aphichaya POLRAK, Kedsaraporn KENBUBPHA, Dutsadee JEUNGSIRAGULWIT, Apisit CHAROENSUK, & Boonsita KAEWKULCHAI Prasrimahabohidi Psychiatric Hospital, Department of Mental Health, Ministry of Public Health, Thailand</p> <p>V13-7: <i>AI-Enhanced School–Hospital Digital Platform3 for Early Detection and Prevention of Multi-Problem Behaviors in Thai Adolescents: A Feasibility Study under the School Hero Policy</i> Supaporn JANSAM, PhD Student, Mahasarakham University, Thailand</p>	
14:00 – 14:45	<p>Keynote Workshop 1 (KW1) <i>From Digital Tool to Clinical Pathway: Deploying Digital Remote Monitoring in Real-world Psychosis Care</i></p> <p>Keynote Speaker: Professor Sandra BUCCI Professor of Clinical Psychology, The University of Manchester</p> <p>Moderator: Professor Alex CHAN Dean and Professor, School of Arts and Humanities, Tung Wah College</p>	<p>Venue: Lecture Theatre, 2/F Online: [Zoom room A] Meeting ID: 965 4729 8945 Password: 444777</p>
14:45 – 15:30	<p>Keynote Workshop 2 (KW2) <i>Co-Designing Neuroergonomic Futures for Mental Health: A SWOT-Based Workshop</i></p> <p>Keynote Speaker: Professor Giacinto BARRESI Professor, Bristol Robotics Laboratory, School of Engineering, CATE, UWE Bristol</p> <p>Moderator: Professor Alex CHAN Dean and Professor, School of Arts and Humanities, Tung Wah College</p>	<p>Venue: Lecture Theatre, 2/F Online: [Zoom room A] Meeting ID: 965 4729 8945 Password: 444777</p>
15:30 – 15:45	<p>Coffee, Networking, Transition</p>	<p>—</p>



東華學院
TUNG WAH COLLEGE



15:45 – 16:30	<p>Keynote Workshop 3 (KW3) <i>Creating Virtual Characters for Mental Health Support</i></p> <p>Keynote Speaker: Professor Mark BILLINGHURST Professor, Adelaide University, University of Auckland</p> <p>Moderator: Professor Alex CHAN Dean and Professor, School of Arts and Humanities, Tung Wah College</p>	<p>Venue: Lecture Theatre, 2/F Online: [Zoom room A] Meeting ID: 965 4729 8945 Password: 444777</p>
16:30 – 17:15	<p>Panel Discussion <i>The Future Potential of Digital Mental Health: Opportunities and Challenges</i></p> <p>Panelists: Professor Giacinto BARRESI, UWE Bristol Professor Sandra BUCCI, University of Manchester Professor Mark BILLINGHURST, University of Adelaide</p> <p>Moderator: Professor Andrea GAGGIOLI Università Cattolica del Sacro Cuore</p>	<p>Venue: Lecture Theatre, 2/F Online: [Zoom room A] Meeting ID: 965 4729 8945 Password: 444777</p>
17:15 – 17:30	<p>Closing Remarks</p>	<p>Venue: Lecture Theatre, 2/F Online: [Zoom room A] Meeting ID: 965 4729 8945 Password: 444777</p>
17:30	<p>End of DMH 2026</p>	—



GUIDELINES FOR PRESENTERS

Oral Presentations

Oral presentations are presented in English. Each session is comprised of four or more presentations, each lasting 12 minutes (all Q and A will be held at the end of each session). The session chairs/moderators will assist in all situations. In our conference, it is not possible to change between sessions. This means that the finalised timetable is followed very strictly. Chairs/Moderators in the sessions will inform all the presenters about time and they are instructed to stop the presenter if they speak longer than 12 minutes. We suggest that you practice your presentation beforehand to keep the timing. Technical guidance and support will be available during the whole conference.

- We recommend the use of PowerPoint and Slide Size of 16:9.
- Please use dark font colors as well as appropriate font size and font type, so that people can read your text. In order to avoid technical challenges, do not use video and/ or audio sound in your presentation.
- If you will use video and/or audio sound, please try the video and/or audio sound before your presentation to ensure it works.
- The file size should not be over 5 MB.
- Please submit your presentation slides to the organising committee at trcdmh@twc.edu.hk by 11 June 2026 (Thu) 12:00 PM, HKT, as a backup. Slides should be in PowerPoint format (.pptx).

[Onsite presenters] Bring your presentation with a memory stick and come to the Session Room 15 minutes before the Sessions starts.

[Online presenters] Please join your Session at least 15 minutes before it starts and enter the Meeting room using the name you registered with so co-chairs can identify you easily.

Keep your camera on during your presentation.

Download and install the latest version of Zoom on your computer before the conference day.

Set your Zoom display backdrop to the official DMH2026 image. You can find the downloadable file in the following link: <https://www.digitalmentalhealth2026.org/presenter-guide>

Resources for using Zoom:

https://support.zoom.us/hc/en-us/articles/204772869-Zoom-Rooms-User-Guide?mobile_site=true



東華學院
TUNG WAH COLLEGE



Posters Presentations

Poster presentations are presented at poster presentation area during the whole conference. Size of the poster should be A0 (841 x 1188 mm), the orientation is vertical, and the poster language should be in English. Presenters are asked to bring your own poster, the material can paper, fabric or some other light material. You are welcomed to set up your poster at the presentation area (3/F Tung Wah College King's Park Campus) from 8:00 a.m. on 16th June, 2026. A conference staff will be available to assist with your set up.

Tips for a good poster:

- Please use clear and easy to read fonts
- Less is more; try to say your message in short
- Avoid complex tables and figures
- If you use pictures, ensure they look sharp after printing and they bring something essential to your poster
- You can use QR codes to link your poster with extra material, videos etc.

We have poster sessions scheduled in the programme. We encourage that you stand beside your poster at that time for questions and discussions.

It may be useful to add a personal profile picture to the poster so that people can reach you if they have questions.



GUIDELINES FOR SESSION CHAIRS

(A) Before the Commencement of a Session

1. Please visit the registration desk located the 2/F Foyer of King's Park Campus to check-in and pick up your conference name badge.
2. Please arrive the designated meeting venue (for virtual session) 10 minutes earlier before a session starts.
3. If there are any changes in the session, the Zoom meeting host (or Programme Chair) will notify you before a session starts.
4. In case a presenter does not show up punctually, please notify the Zoom meeting host (or Programme Chair) or conference's supporting staff as soon as possible.

(B) During a Session

1. Please arrive at the designated meeting room 10 minutes before a session begins, briefly introduce yourself, and announce your arrangement of the presentations to all presenters.
2. Please start the session on time and follow the time allocated to each presentation (12 minutes for each paper and Q & A at the end of each session). No presenter can get any extra time for his/her presentation (except with a very special accommodation request).
3. Papers with more than one presenter (e.g. co-presentation) will not get any extra time for their presentations.
4. Please instruct presenters how to share their presentation slides and start their presentation one by one following the session sequence listed on the conference programme.
5. Please remind presenters of the remaining time they have three minutes (e.g. 3 minutes left, 1 minute left) before the end of their presentations. If a presenter goes beyond the allotted time, the Session Chair should ask him/her politely to close the presentation promptly.
6. Please try to make sure the session (including Q & A) is timely proceeded since some attendees need to move from sessions to sessions.
7. If there are any issues affecting the continuance of your session, please inform the Zoom meeting host immediately.
8. Our Zoom host will take a group photo (screen shot) at the end of each session. Please help gather the presenters and the audience (online and onsite) for the photo taking.

Resources for using Zoom:

https://support.zoom.us/hc/en-us/articles/204772869-Zoom-Rooms-User-Guide?mobile_site=true



東華學院
TUNG WAH COLLEGE



KEYNOTE SPEAKER: Professor Sally CHAN

Keynote Lecture 1 (KL1) (16/6/2026, 10:00-10:45 HKT)
Maximizing the Real-World Potential of Digital Mental Health

Onsite Venue: Lecture Theatre 2/F, KPC, TWC

Zoom ID: 965 4729 8945

Password: 444777



Professor Sally CHAN

President, Tung Wah College

Co-Director, Translational Research Centre for Digital Mental Health (TRC-DMH)

Co-Director, Smart Health Applied Research centre (SHARE)

Biography:

Professor Sally CHAN is the third President of the Tung Wah College. Professor CHAN has rich management experience in tertiary institutions. During her terms of service as the Pro Vice-Chancellor (PVC) of the University of Newcastle Singapore Campus (UON Singapore), she successfully led the University to achieve prudent growths in student population and financial capacity.

Professor CHAN is an international renowned scholar in nursing education and research. Her fields of specialisation include mental health care and psychosocial interventions, perinatal mental health and health professional education. Most of her studies are translational research involving interdisciplinary and international collaboration.

She has been supported by more than 100 funded studies and has over 400 publications in international healthcare journals and international presentations. She was named by the Journal of Advanced Nursing (JAN) as the top 10 Australia and New Zealand Professors with the highest education-focused citations in 2018. In 2016, she was appointed as the Deputy Director of Priority Research Centre of Brain and Mental Health, University of Newcastle to lead multidisciplinary teams related to brain and mental health research in the University.



東華學院
TUNG WAH COLLEGE



KEYNOTE SPEAKER: Professor Sandra BUCCI

Keynote Lecture 2 (KL2) (16/6/2026, 11:00-11:45 HKT)
From Signals to Systems: Building Digital Care Pathways for Severe Mental Illness

Onsite Venue: Lecture Theatre 2/F, KPC, TWC
Zoom ID: 965 4729 8945
Password: 444777

Keynote Workshop 1 (KW1) (18/6/2026, 14:00-14:45 HKT)
From Digital Tool to Clinical Pathway: Deploying Digital Remote Monitoring in Real-world Psychosis Care

Onsite Venue: Lecture Theatre 2/F, KPC, TWC
Zoom ID: 965 4729 8945
Password: 444777



Professor Sandra BUCCI

Professor of Clinical Psychology,
The University of Manchester

Biography:

Professor BUCCI is the first NIHR Research Professor at the University of Manchester and a Professor of Clinical Psychology. She is an Honorary Consultant Clinical Psychologist at Greater Manchester Mental Health NHS Foundation Trust (GMMH), co-Director of the Complex Trauma and Resilience Research Unit (GMMH), and Editor-in-Chief of the British Psychological Society journal *Psychology and Psychotherapy, Theory, Research and Practice*.

She completed her clinical training at The University of Newcastle, Australia and worked as a clinical psychologist at an Early Intervention Service for a number of years before moving to the UK and taking up a split clinical academic post. She leads a large programme of research focused on developing digital solutions for people with severe mental health problems and manages a portfolio of research from all the major funders, included The Wellcome Trust, National Institute for Health and Care Research (NIHR), and the Medical Research Council.



東華學院
TUNG WAH COLLEGE



KEYNOTE SPEAKER: Professor Giacinto BARRESI

Keynote Lecture 3 (KL3) (16/6/2026, 11:45-12:30 HKT)
Neuroergonomics in Robotic-Digital Systems for Health: Bridging Technology and Care

Onsite Venue: Lecture Theatre 2/F, KPC, TWC
Zoom ID: 965 4729 8945
Password: 444777

Keynote Workshop 2 (KW2) (18/6/2026, 14:45-15:30 HKT)
Co-Designing Neuroergonomic Futures for Mental Health: A SWOT-Based Workshop

Onsite Venue: Lecture Theatre 2/F, KPC, TWC
Zoom ID: 965 4729 8945
Password: 444777

Professor Giacinto BARRESI

Professor, Bristol Robotics Laboratory,
School of Engineering, CATE,
UWE Bristol

Biography:

Giacinto BARRESI (PhD in robotics, MSc in psychology and neuroscience) is a Professor at the Bristol Robotics Laboratory, UWE Bristol (United Kingdom). He works, through the approaches of cognitive ergonomics and neuroergonomics, on robotic-digital systems research for health and safety, especially for biomedical (assistive, prosthetic, rehabilitative, surgical) applications.

He is a member of the Executive Committee of UK-RAS network for robotics and autonomous systems, the co-chair of the Technical Committee on Human Factors in Robotics at the International Ergonomics Association, the chair for Telehealth and Telemedicine in the IEEE Telepresence initiative, the Industry Liaison of the Technical Committee on Human-Machine Interaction and User Experience of the IEEE Consumer Technology Society.

He previously was a Researcher at the Istituto Italiano di Tecnologia in Genoa (Italy), where he coordinated activities like the ENACT project, funded by the Italian Multiple Sclerosis Foundation to develop training solutions like biofeedback exergames in virtual and augmented environments. He also was a Scholar-In-Residence at the Indian Institute of Technology Gandhinagar (India), and a Guest Lecturer at the Kyushu University in Fukuoka (Japan).





東華學院
TUNG WAH COLLEGE



KEYNOTE SPEAKER: Professor Winnie MAK

Keynote Lecture 4 (KL4) (16/6/2026, 14:00-14:45 HKT)
Opportunities and Challenges in Co-Creating a Hybrid Human-AI Mental Health Ecosystem

Onsite Venue: Lecture Theatre 2/F, KPC, TWC
Zoom ID: 965 4729 8945
Password: 444777



Professor Winnie MAK

Professor of Psychology,
The Chinese University of Hong Kong

Biography:

Professor Winnie MAK is a Professor at the Department of Psychology of The Chinese University of Hong Kong, with research focuses on stigma reduction and promotion of mental health. She obtained her Ph.D. in Clinical Psychology at the University of California, Santa Barbara. She is a Fellow of the American Psychological Association, Association for Psychological Science, Society for Community Research and Action, and Hong Kong Psychological Society.

She is named World's Top 2% Scientists by Elsevier and Stanford University and Top Scientists in Psychology in China by Research.com. She has served on the Advisory Group on Mental Health Promotion for the Hong Kong SAR Government. As a community-based clinical psychologist and a person with diverse lived experience, she co-founded StoryTaler and developed an online mental health platform (Jockey Club TourHeart+ Project) in Hong Kong. Her Diversity and Well-being Lab aims to promote social equity and well-being for all, and this mission drives our research and related activities



東華學院
TUNG WAH COLLEGE



KEYNOTE SPEAKER: Professor Ben FONG

Keynote Lecture 5 (KL5) (17/6/2026, 09:30-10:15 HKT)
Applications of Digital Technologies in Primary Mental Health Care

Onsite Venue: Lecture Theatre 2/F, KPC, TWC

Zoom ID: 965 4729 8945

Password: 444777



Professor Ben FONG

Professor of Practice
The Hong Kong Polytechnic University

Biography:

Professor Ben FONG, a specialist in community health, is the Professor of Practice in the Faculty of Health and Social Sciences at The Hong Kong Polytechnic University (PolyU) and the Director of the Centre for Ageing and Healthcare Management Research at the College of Professional and Continuing Education (CPCE).

Professor FONG received his medical training at the Royal Prince Alfred Hospital of The University of Sydney, Australia, where he was also awarded the Master of Public Health degree in 1989. He has also achieved post-graduate qualifications in Medical Administration, Community Medicine, Family Medicine and Occupational Medicine. Ben has taught Medical, Nursing and Chinese Medicine students, and supervised postgraduate candidates in Public Health, Family Medicine and Healthcare Management for years.

In over forty years of his professional career, Professor FONG has served in public, private and university healthcare facilities both in Hong Kong and Sydney. He has commissioned and managed two local hospitals, including Ruttonjee Hospital and a new private hospital, Union Hospital. He has also served as the Director of University Health Service of CUHK.



東華學院
TUNG WAH COLLEGE



KEYNOTE SPEAKER: Professor Mark BILLINGHURST

Keynote Lecture 6 (KL6) (17/6/2026, 10:15-11:00 HKT)
Using Empathic Computing to Address Mental Health Issues

Onsite Venue: Lecture Theatre 2/F, KPC, TWC
Zoom ID: 965 4729 8945
Password: 444777

Keynote Workshop 3 (KW3) (18/6/2026, 15:45-16:30 HKT)
Creating Virtual Characters for Mental Health Support

Onsite Venue: Lecture Theatre 2/F, KPC, TWC
Zoom ID: 965 4729 8945
Password: 444777



Professor Mark BILLINGHURST

Professor, College of Engineering and IT, Adelaide University
Auckland Bioengineering Institute, University of Auckland

Biography:

Mark BILLINGHURST is a Professor and Director of the Australian Research Centre for Interactive and Virtual Environments at Adelaide University in Adelaide, Australia, and a Professor at the Auckland Bioengineering Institute at the University of Auckland in Auckland, New Zealand. He earned a PhD in 2002 from the University of Washington and researches innovative computer interfaces that explore how virtual and real worlds can be merged, publishing over 900 papers in topics such as wearable computing, AR/VR, digital health, and mobile interfaces.

Prior to joining the University of South Australia, he was Director of the HIT Lab NZ at the University of Canterbury and he has previously worked at British Telecom, Nokia, Google and the MIT Media Laboratory. He has won many awards for his research, including the IEEE VR/VGTC Technical Achievement Award (2013), the IEEE ISMAR Career Impact Award (2019), and the IEEE VR/VGTC Career Award (2019), and in 2022, he was inducted into the inaugural class of the IEEE VGTC VR Academy. He is a Fellow of the IEEE.



東華學院
TUNG WAH COLLEGE



KEYNOTE SPEAKER: Professor Andrea GAGGIOLI

Keynote Lecture 7 (KL7) (17/6/2026, 11:15-12:00 HKT)
User Experience Design for Cyberpsychology and Digital Wellbeing Applications

Onsite Venue: Lecture Theatre 2/F, KPC, TWC
Zoom ID: 965 4729 8945
Password: 444777



Professor Andrea GAGGIOLI

Professor of Psychology
Università Cattolica del Sacro Cuore

Biography:

Professor Andrea GAGGIOLI is a psychologist and Full Professor at Università Cattolica del Sacro Cuore in Milan, Italy, where he directs the Research Center in Communication Psychology (PSICOM) and the International Master in User Experience Psychology.

Prior to this appointment, Professor GAGGIOLI collaborated with the Competence Center for Virtual Reality at the Fraunhofer Institute for Industrial Engineering, Stuttgart, Germany. He obtained a M.Sc. in Psychology from the University of Bologna and a Ph.D in Psychobiology from the Faculty of Medicine of the University of Milan.

His research focuses on the intersection of psychology, technology, and human experience, with particular emphasis on the use of immersive media and generative artificial intelligence to support mental health and well-being. He is a leading scholar in the field of Positive Technology, which explores how digital technologies can enhance personal experience and promote psychological growth. He has published extensively on presence, creativity, and cyberpsychology.



東華學院
TUNG WAH COLLEGE



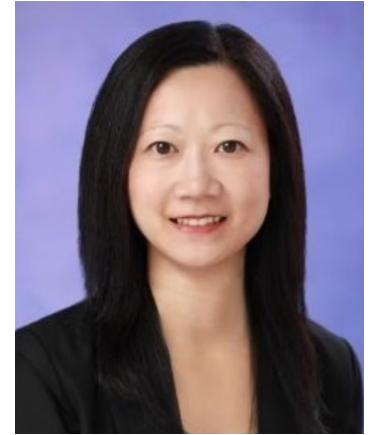
KEYNOTE SPEAKER: Dr Donna BROWN

Keynote Lecture 8 (KL8) (17/6/2026, 12:00-12:45 HKT)
From Lab to Life: Engineering Scalable Digital Mental Health Solutions

Onsite Venue: Lecture Theatre 2/F, KPC, TWC

Zoom ID: 965 4729 8945

Password: 444777



Dr Donna BROWN

Associate Director
Hong Kong Science & Technology Park

Biography:

Dr Donna BROWN is the Associate Director of Digital Health, Life and Health Technology at the Hong Kong Science and Technology Parks Corporation (HKSTP), where she drives ecosystem development and commercialization in digital health and medical technology.

A seasoned healthcare professional with over 20 years of experience, Dr BROWN has held commercial, industrial, and leadership roles at several Fortune 500 multinationals. Her extensive career in pharmaceuticals and medical device technology across Taiwan, China, and Hong Kong has equipped her with deep expertise in strategic and operational business management, as well as talent development.

Passionate about fostering innovation, Dr BROWN actively engages with the startup community to accelerate the translational development of biomedical and health technologies in the region. She has served as a mentor in PolyU's Lean Launchpad Program for five years and holds advisory roles with the Innovation and Technology for Ageing (ITA) Committee, the HKCSS Strategy Committee on Tech-Enablement, and the Steering Committee of the Translational Research Center for Digital Mental Health at Tung Wah College.

Trained as a research scientist, she holds a PhD in Pharmacology from the University of Hong Kong.



東華學院
TUNG WAH COLLEGE

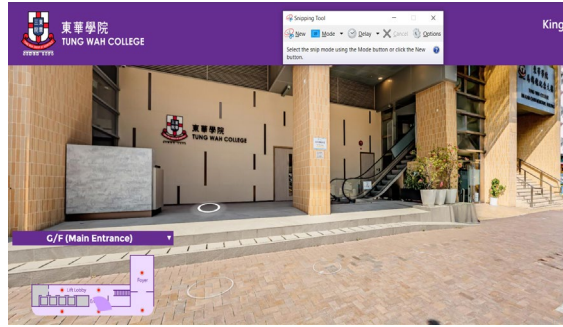


Address, Venue, and Zoom Links

Conference Address:

Tung Wah College, King's Park Campus, Ma Kam Chan Memorial Building, 31 Wylie Road, Homantin, Kowloon, Hong Kong,
東華學院何文田衛理道校舍

Find the location on Google Maps: <https://maps.app.goo.gl/kGXhJkKZApoeC5mW7>



Transportation to King's Park Campus:

By MTR

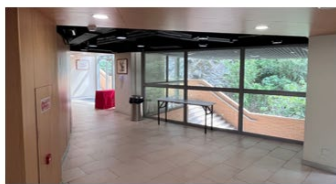
Yau Ma Tei Station Exit A2 or Exit D: Waterloo Road à Wylie Road (10 min walk)

Mong Kok East Station: Yim Po Fong Street à Wylie Road (10 min walk)

Registration and Check-in Desk:

2/F Foyer, Tung Wah College, King's Park Campus, Ma Kam Chan Memorial Building
東華學院何文田校舍二樓

Conference Venues:



2/F Foyer (Registration)



2/F Lecture Theatre



3/F Campus Square



Breakout Rm1, RM1402 (14/F)



Breakout Rm2, RM1405 (14/F)



Breakout Rm3, RM1506 (15/F)

Conference Activities:

2/F Lecture Theatre: Opening and closing ceremony, keynote lectures, symposiums, and panel keynote workshops

3/F Campus Square: Poster session, networking lunch, exhibition booths, and networking reception

14/F and 15/F Breakout Rooms: Oral presentation sessions



Zoom Links:

Zoom link A (for all keynote sessions, keynote workshops, panel session, & invited symposiums)

Zoom link B (for breakout sessions only)

Zoom link C (for breakout sessions only)

Zoom link D (for breakout sessions only)

Note: Please refer to the programme agenda for zoom links and meeting IDs of particular sessions and presentations.

Zoom Links and Meeting IDs for the Digital Mental Health International Conference 2026

Venue	Zoom Links
Zoom Room A Lecture Theatre, 2/F	https://twc.zoom.us/j/96547298945?pwd=byuCv7GGkW32l2KywXaWB7VaiZUVgB.1 Meeting ID: 965 4729 8945 Password: 444777
Zoom Room B KPC Room 1405	https://twc.zoom.us/j/91341200738?pwd=ivl8wdQO5Wh4UcZ25nsP0e2qLCxPt1.1 Meeting ID: 913 4120 0738 Password: 222888
Zoom Room C KPC Room 1506	https://twc.zoom.us/j/91341219183?pwd=KWT5zpfjFTFdrnH7r9fbK9mlbOapuT.1 Meeting ID: 913 4121 9183 Password: 333111
Zoom Room D KPC Room 1402	https://twc.zoom.us/j/94933461287?pwd=UDcjj0jYRQgGUuStu5xQaX8WBUe0sN.1 Meeting ID: 949 3346 1287 Password: 555000



東華學院
TUNG WAH COLLEGE



Digital Mental Health International Conference 2026 (DMH2026)

16 – 18 June 2026

Translational Research Centre for Digital Mental Health, Tung Wah College

Co-organised:



Funded by:

The DMH 2026 is supported by the Institutional Development Scheme Research Infrastructure Grant (UGC/IDS(R)17/23) funded by the Research Grants Council of HKSAR.

Website:

<https://www.digitalmentalhealth2026.org>

Email:

trcdmh@twc.edu.hk

Registration Link:

